

Life Advocacy Services

- 100% Personalized Service
- Customer Directed
- Independent Living Goals
- Continuity of Care
- Coordination of Services
- Care Management
- Transitional Counseling
- Family Consultations
- Physician Consultations
- No Age Requirements



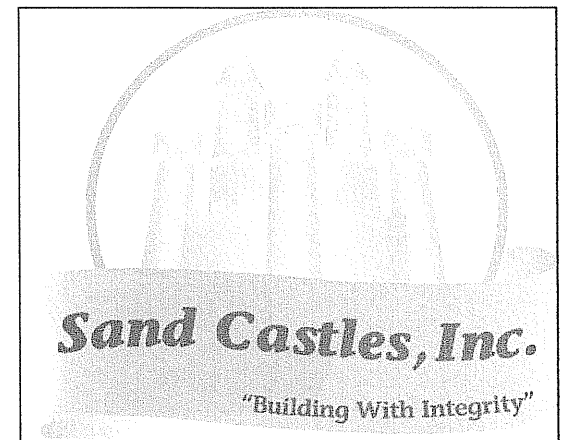
Janis Fisher Miskimins
Founder & President
Sand Castles, Inc.

"Building with Integrity"

This is our promise. We will work hard to meet your needs promptly, with dedicated personal advocacy.

www.sandcastlesonline.com

Sand Castles, Inc.
1504 E 800th Road
Lawrence, KS 66049



Personal Advocacy

**Case Management
and
Guardian Services**



Sand Castles, Inc.

1504 E 800th Road
Lawrence, KS 66049

785-832-2345

www.sandcastlesonline.com



Personal Service Guaranteed

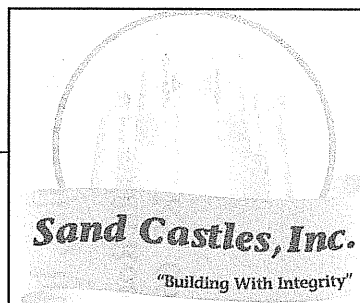
We Respect and Serve You

- Your right of choice
- Prompt and reliable service
- Private pay secures your options
- Your Privacy Counts!



Working Together

Your Goals Are Our Goals
Dependable Service
Confidential
All Ages



What is Case Management?

- Case Management is special, personal advocacy that ensures you receive all recommended services. You live as independently as possible in the least restrictive environment of your choice.
- Case Managers are trained to listen and implement care plans so that you receive the highest level of care when dealing with personal issues.

What is a Legal Guardian?

- A Legal Guardian is a person who provides greater security for individuals of all ages who can not advocate or otherwise manage their own daily life.
- Legal Guardians are required by Kansas law to 'become acquainted with the ward (person), the spouse of the ward and other interested persons associated with the ward.' KSA 59-3075(2)

What can an Advocate do?

- Advocacy is a person-centered way to address needs, desires, concerns and help you resolve most problems.
- An Advocate is a person chosen to make sure that your concerns are addressed and handled responsibly.

**When You Need Help...
You Can Count on Us!**

Case Management Means:

- Supported Independent Living
- Specialized Personal Advocacy
- Coordination of Services
- Continuity of Care Needs
- Transitional Counseling
- Family Conferences
- Medical/Professional Consults
- Integrity of Service
- Prompt Service
- Private Pay = More Choices

Guardian Service Means:

- Advocate for Special Needs
- Personal Relationship
- Monitor Daily Living Concerns
- Transitional Counseling
- Accountable to Courts
- Family Consultations
- Training for Family
- Integrity of Service
- Prompt Service

Sand Castles, Inc.

1504 E 800th Road
Lawrence, KS 66049

785-832-2345

Fax: 785-865-4141

www.sandcastlesonline.com

E-mail: janis@sandcastlesonline.com

Life Advocacy Services

- 100% Personalized Service
 - Customer directed goals
 - Independent living support
 - Problem solving for all ages
- Case Management
 - Assist with daily living needs
 - Provide dependable service
- Guardian Services
 - Caring for children & adults
 - Personal long-term relationship
- Transitional Counseling
 - Health & medical changes
 - Daily living challenges
- Physician Consultations
 - Review concerns
 - Create plan for best care
- Prompt, Dependable Service



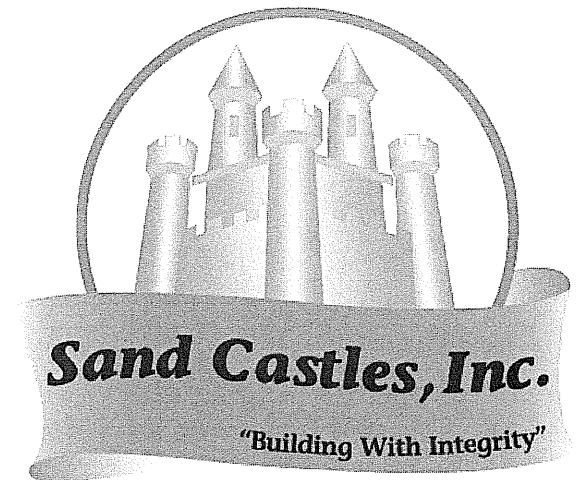
Janis Fisher Miskimins
Founder & President of Sand Castles,

"Building with Integrity"

We work to meet your needs promptly,
with dedicated personal advocacy.

Call 785-832-2345

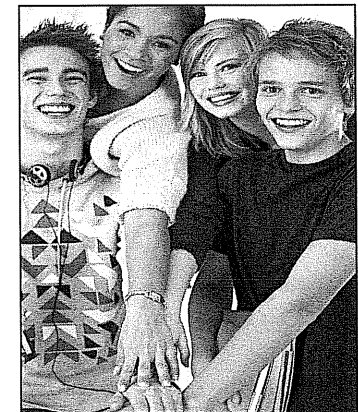
Sand Castles, Inc.
1504 E 800th Road
Lawrence, KS 66049



Educational Advocacy

**Problem Solving
and**

**Greater Hope
For Children and Families**

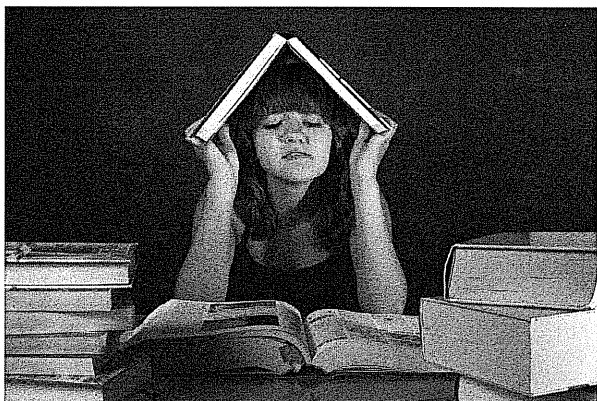


Sand Castles, Inc.

1504 E 800th Road
Lawrence, KS 66049

785-832-2345

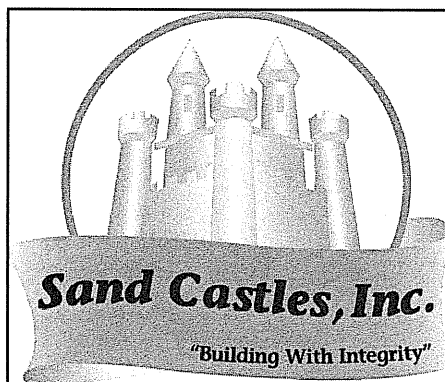
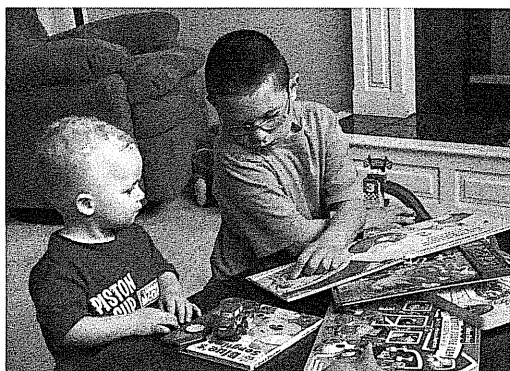
www.sandcastlesonline.com



Educational Counseling

Counseling assists students with educational problems and can create renewed confidence. Progress begins as frustrations decrease. Students often find learning becomes easier.

- We listen to student concerns.
- We create a list of strengths.
- We identify learning style.
- We set-up family conferences.
- We consult with educators.
- We develop a "Plan for Success."
- We help with skill building.

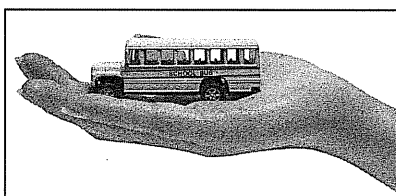


What is Advocacy?

The advocacy process can create an atmosphere of understanding and renew cooperation between all individuals.

Goals of Educational Advocacy

- Review concerns and needs
- Identify student strengths & talents
- Meet with school personnel
- Develop "Plan for Success"
- Coordinate necessary support services
- Support family throughout process
- Encourage student to achieve success



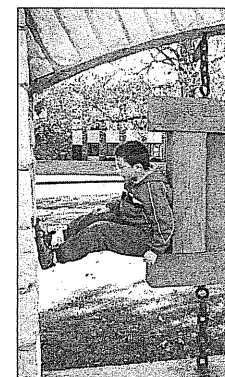
With increased knowledge and the desire to do better, anyone can work through any problem. Personal success is available for people of all ages — in all situations. Success is based on realistic goal setting!

Autism/Aspergers Support:

There is much to love in our children. There is much to hope for our children. There is much to understand and learn to accept ... while still searching for answers. There can be great joy in the daily interactions with our children.

Sand Castles Promises To:

- Listen to concerns
- Search for practical solutions
- Consult with teachers, counselors and physicians
- Review nutritional issues
- Develop a "Hope Approach"
- Coordinate services
- Assist in monitoring, documenting and reporting
- Gather resources
- Provide family counseling



Sand Castles, Inc.

1504 E 800th Road
Lawrence, KS 66049

785-832-2345

Fax: 785-865-4141

www.sandcastlesonline.com